

# MASTERING TALENT FLOW

Chances are, you have a general idea of which companies have successfully recruited your key talent. But wouldn't it be great if you had greater visibility into your organization's talent flow and the talent flow of your competitors?

Clear insight into talent flow can help you answer questions like:



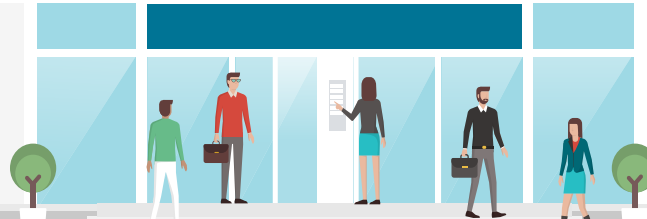
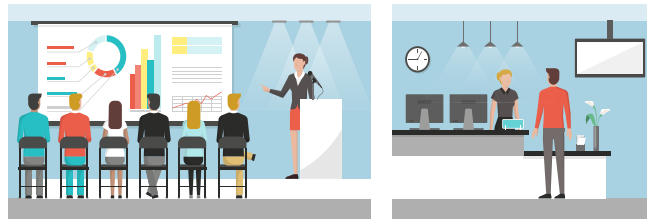
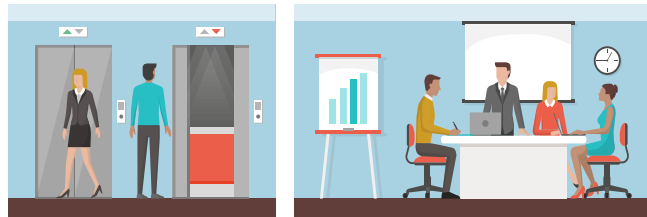
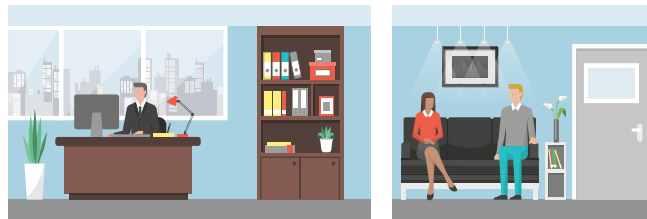
Which organizations are we having the most success with engaging and recruiting talent?



Where else should we look for new passive candidates?



Where is our talent going when leaving the organization?



What top businesses are my competitors having success with recruiting talent?



What businesses are attracting my competitors' talent?



Are we losing talent to businesses that fall outside of our industry?

ENGAGE is the world's first AI-powered platform to support both recruiting and retention with data and insights. Customers use ENGAGE to power their Talent Mapping, Competitive Intelligence, Passive Candidate Engagement, Outbound Recruiting, Talent Retention and Engagement, and Web Listening in one brilliant engine.

Contact us today:

hello@engagetalent.com  
(800) 218-8147  
www.engagetalent.com